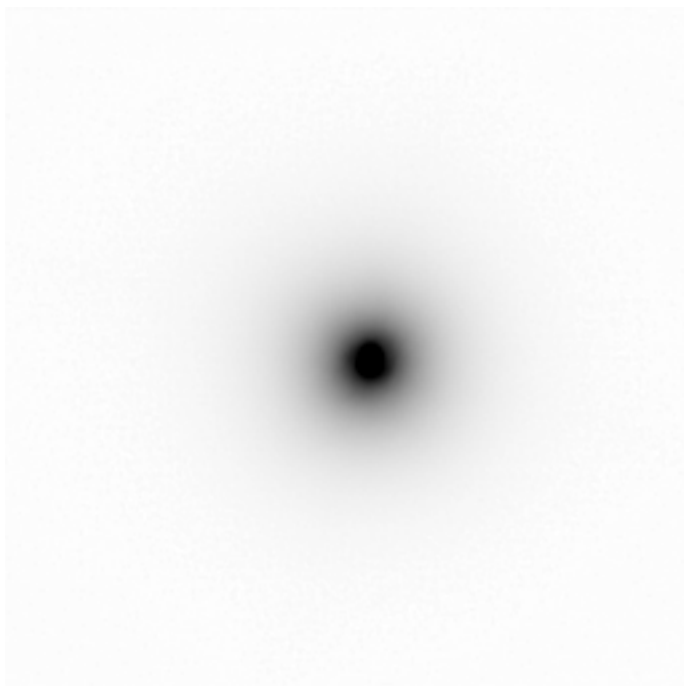


**Image YAOGAN3 by 7 frames from the telescope,
processed by "by the blind deconvolution."**



Kadr 1.



10th iteration of the algorithm.



16 th iteration of the algorithm.



35 th iteration of the algorithm.



47 th iteration of the algorithm.



49 th iteration of the algorithm.

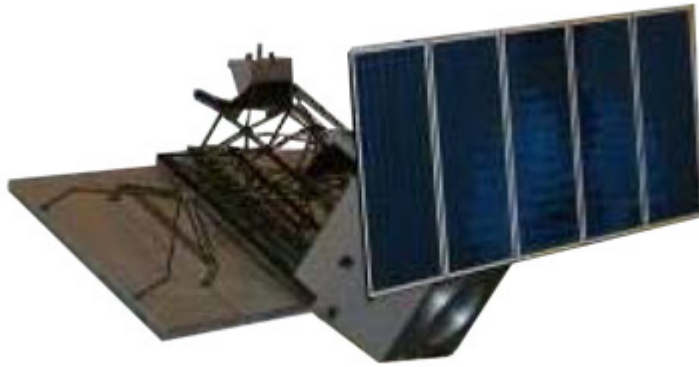


Image YAOGAN1 from the Internet.

There is no images YAOGAN 3 directly in the Internet. From the figures above we can see that the satellite has a cylindrical shape, and in this figure, it has the shape of a cube. But in this figure and figures above, the presence of a telescope may be visible at the bottom of the satellite .